


Valve body, seal material and medium selection table P01

Model compilation method of solenoid valve P02


Flow calculation method Seal material review P03




2WS1 series Brass Direct lifting diaphragm solenoid valve 2/2 way normally closed type

Body material:brass Pressure:0-10Bar Diameter:15-50mm

Medium:water, air, steam, light oil, natural gas, etc






2WS1 series stainless steel Direct lifting diaphragm solenoid valve 2/2 way normally closed type

Body material:stainless steel Pressure:0-10Bar Diameter:15-50mm

Medium:water, air, steam, light oil, natural gas, etc






ZS series Brass Direct lifting diaphragm solenoid valve 2/2 way normally closed type

Body material:brass Pressure:0-10Bar Diameter:15-50mm

Medium:water, air, steam, light oil, natural gas, etc






ZS series stainless steel Direct lifting diaphragm solenoid valve 2/2 way normally closed type

Body material:stainless steel Pressure:0-10Bar Diameter:15-50mm

Medium:water, air, steam, light oil, natural gas, etc







ZS series stainless steel Flange Direct lifting diaphragm solenoid valve 2/2 way normally closed type

Body material:stainless steel Pressure:0-10Bar Diameter:15-50mm

Medium:water, air, steam, light oil, natural gas, etc







ZS series Brass Direct lifting diaphragm solenoid valve 2/2 way normally open type

Body material:brass Pressure:0-5Bar Diameter:15-50mm

Medium:water, air, steam, light oil, natural gas, etc







ZS series stainless steel Direct lifting diaphragm solenoid valve 2/2 way normally open type

Body material:stainless steel Pressure:0-5Bar Diameter:15-50mm

Medium:water, air, steam, light oil, natural gas, etc






ZS series stainless steel Flange Direct lifting diaphragm solenoid valve 2/2 way normally open type

Body material:stainless steel Pressure:0-5Bar Diameter:15-100mm

Medium:water, air, steam, light oil, natural gas, etc





STP11 series pilot operated diaphragm Brass 2/2 way normally closed type P12

Body material:brass Pressure:0-16Bar (Max 20Bar) Diameter:15-50mm

Medium:water, air, steam, light oil, natural gas, etc



STP11 series pilot operated diaphragm Stainless steel 2/2 way normally closed type P13

Body material:stainless steel Pressure:0-16Bar (Max 20Bar) Diameter:15-50mm

Medium: water, air, steam, light oil, natural gas, etc



STP11 flange series pilot operated diaphragm stainless steel 2/2way normally closed type P14

Body material:stainless steel Pressure:0-16Bar (Max 20Bar) Diameter:15-50mm

Medium: water, air, steam, light oil, natural gas, etc



STP11 series pilot operated diaphragm brass 2/2 way normally open type P15

Body material:brass Pressure:0-16Bar (Max 20Bar) Diameter:15-50mm

Medium:water, air, steam, light oil, natural gas, etc



STP11 pilot operated diaphragm stainless steel 2/2way normally open type P16

Body material:stainless steel Pressure:0-16Bar (Max 20Bar) Diameter:15-50mm

Medium: water, air, steam, light oil, natural gas, etc



STP11 flange series pilot operated diaphragm stainless steel 2/2way normally open type P17

Body material:stainless steel Pressure:0-16Bar (Max 20Bar) Diameter:15-50mm

Medium: water, air, steam, light oil, natural gas, etc



STP21 2/2 way compact direct-acting solenoid valve normally closed type P18

Body material:brass,stainless steel Pressure:0-25Bar Diameter:1.0-6.0mm

Medium: water, air, steam, light oil, natural gas, etc



STP21 2/2way compact direct-acting solenoid valve normally open type P19

Body material:brass,stainless steel Pressure:0-25Bar Diameter:1.0-5.0mm

Medium: water, air, steam, light oil, natural gas, etc



STP31 2/2 way compact pilot operated solenoid valve normally closed type P20

Body material:brass,stainless steel Pressure:0-16Bar Diameter: 12.0mm

Medium: water, air, steam, light oil, natural gas, etc



STP41 2/2way compact direct-acting solenoid valve normally open type P21
 Body material:brass,stainless steel Pressure:0-15Bar Diameter: 1.0-4.0mm
 Medium: water, air, steam, light oil, natural gas, etc



STP51 2/2 way compact direct-acting solenoid valve normally closed type P22
 Body material:brass,stainless steel Pressure:0-16Bar Diameter: 10-12mm
 Medium: water, air, steam, light oil, natural gas, etc



DF cast iron flange series liquid solenoid valve P23
 Body material:cast iron Pressure:0-10Bar Diameter: 65-150mm
 Medium: water, air, steam, light oil, natural gas, etc



2W series Brass Direct lifting diaphragm solenoid valve 2/2 way normally closed type P24
 Body material:brass Pressure:0-8Bar Diameter: 2.5-50mm
 Medium: water, air, steam, light oil, natural gas, etc



2W series stainless steel Direct lifting diaphragm solenoid valve 2/2 way normally closed type P25
 Body material:stainless steel Pressure:0-8Bar Diameter: 15-100mm
 Medium: water, air, steam, light oil, natural gas, etc



2W series stainless steel Flange Direct lifting diaphragm solenoid valve 2/2 way normally closed type P26
 Body material:stainless steel Pressure:0-8Bar Diameter: 15-50mm
 Medium: water, air, steam, light oil, natural gas, etc



STGT series direct-acting solenoid valve 3/2 way type P27-28
 Body material:brass,stainless steel Pressure:0-25Bar Diameter: 1.0-4.0mm
 Medium: water, air, steam, light oil, natural gas, etc



STGV series direct-acting solenoid valve 3/2 way type P29-31
 Body material:brass,stainless steel Pressure:0-40Bar Diameter: 1.0-4.0mm
 Medium: water, air, steam, light oil, natural gas, etc



STGY series brass high pressure direct-acting solenoid valve 2/2 way normally closed type P32
 Body material:brass Pressure:0-170Bar Diameter: 1.0-9.0mm
 Medium: water, air, steam, light oil, natural gas, etc



STGY series stainless steel high pressure direct-acting solenoid valve 2/2 way normally closed type P33
 Body material:stainless steel Pressure:0-170Bar Diameter: 1.0-9.0mm
 Medium: water, air, steam, light oil, natural gas, etc



STTG series high pressure solenoid valve 2/2 way normally closed type P34
 Body material:brass,stainless steel Pressure:0-200Bar Diameter: 1.0-25mm
 Medium: water, air, steam, light oil, natural gas, etc



STH series high pressure solenoid valve 2/2 way normally closed/normally open type P35-36
 Body material:brass Pressure:0-100Bar Diameter: 16.0mm
 Medium: water, air, steam, light oil, natural gas, etc



ZCM Zero Pressure Differential Gas Solenoid Valve 2/2 way type P37
 Body material:brass,stainless steel Pressure:0-5Bar Diameter: 3-500mm
 Medium:natural gas, coal gas, etc



ZCM Zero Pressure Flange Differential Gas Solenoid Valve 2/2 way type P38
 Body material:cast iron,stainless steel Pressure:0-2Bar Diameter: 50-150mm
 Medium:natural gas, coal gas, etc



STZH series combined type solenoid valve normally closed type P39
 Body material:brass,stainless steel Pressure:0-25Bar Diameter: 1.0-6.0mm
 Medium: water, air, steam, light oil, natural gas, etc












STM1 series small direct-acting solenoid valve 2/2 way type P40
 Body material:brass(stainless steel custom) Pressure:0-25Bar Diameter: 1.0-3.0mm
 Medium: water, air, steam, light oil, natural gas, etc



STM3 series small direct-acting solenoid valve 3/2 way type P41
 Body material:brass(stainless steel custom) Pressure:0-20Bar Diameter: 1.0-2.0mm
 Medium: water, air, steam, light oil, natural gas, etc



STDF series < underwater > Special solenoid valve P42
 Body material:brass,stainless steel Pressure:0-5Bar Diameter: 15-150mm
 Applicable to waterscape, music fountain industry (running spring, jumping jet)

	ZCT series stainless steel solenoid valve 2/2 way normally closed type Body material:stainless steel Pressure:0-12Bar Diameter: 3.0-25mm Medium: water, air, steam, light oil, natural gas, etc	P43
	STDP-1 2/2 way direct-acting Timing drain solenoid valve Body material:brass Pressure:0-16Bar Diameter: 3.0mm Medium: water, air, etc	P44
	STDP-2 2/2 way direct-acting Timing drain solenoid valve Body material:brass Pressure:0-16Bar Diameter: 3.0mm Medium: water, air, steam, light oil, natural gas, etc	P45
	STK series pilot operated diaphragm 2/2 way Plastic irrigation solenoid valve normally closed type Body material:nylon(PA66) Pressure:0-10Bar Diameter: 25-100mm Medium: water	P46~P47
	STDM Right angle electromagnetic pulse valve < dust removal valve > Body material:Aluminum alloy Pressure:0.3-8Bar Diameter: 15-76mm Applicable to dust removal system of dust collector	P48
	STF11 PTFE Solenoid Valve Body material: PTFE Pressure:0-6Bar Diameter: 3.0-50mm Suitable for strong acid and alkali (organic solution)	P49~50
	STF21 UPVC Solenoid Valve Body material: UPVC Pressure:0-6Bar Diameter: 15-50mm Suitable for weak acid and weak base (gas, liquid)	P51~52
	STF31 CPVC Solenoid Valve Body material: CPVC Pressure:0-6Bar Diameter: 15-50mm Suitable for Sulfuric acid below 60%, hydrochloric acid of any concentration and strong alkali	P53~54
	JZF series pneumatic angle seat valve Body material:stainless steel Pressure:0-16Bar Diameter: 15-65mm Connection mode: thread type, flange type and quick installation type	P55~59

Comparison of common coil forms ----- P61~63

A stands for applicable B stands for not applicable C stands for to be determined

Material Medium	brass	cast iron	stainless steel	Plastic	NBR	EPDM	VITON	PTFE
Air	A	A	A	A	A	A	A	A
Natural gas	A	A	A		A	A	A	A
oxygen	A	A	A	A	A	A	A	A
hydrogen	A		A		A		A	A
City gas	A		A				A	A
Industrial gas	A		A		A			A
nitrogen	A		A				A	A
Refined oil	A	A	A				A	A
Ordinary water	A	A	A	A	A	A	A	A
Steam	A	A	A		B	A	A	A
Drinking water	A	A	A	A		A		A
Seawater	A		A	A	A	A	A	A
industrial waste water			A				A	A
Gasoline	A	A	A			B	A	A
kerosene	A	A	A	A	A	B	A	A
Diesel oil	A	B	A	A	A	B	A	A
Milk	A	A	A	A	A	A	A	A
Liquor	A	A	A	A	A	A	A	A
Alcohol	A	A	A		A	B		A
Acetylene	A	A	A		A	B	A	A
Ethanol	A	A	A		A	B	A	A
Acetone	A	A	A		B	A	B	A
Ammonia					B			A
Toluene	A	A	A			B	A	A
Xylene	A	A	A			B	A	A
Propane	A	A	A			B	A	A
Methane	A	A	A		A	B	A	A
Sulfur dioxide	A	A	A				A	A
Sodium hydroxide<20%		A	A		A	B		A
Nitric acid<10%			A				A	A
Sulfuric acid<20%							A	A
Hydrochloric acid 10%								A
Acetic acid	A	A	A		A	B	A	A

	1	2	3	4	5	6	7			8	9	10	
	Model	Diameter (DN)		Mode of Operation	Connection Mode	Body Material	Seal Material	Coil model			Coil class	Voltage	Other
								category	number	Connection mode			
e.g.	STDF	25		2	6	1	N	S	1	4	H	1	
	STDF	01=1.0	B=80.0	K=	1=1/8"	1=brass	N=NBR	B=Plastic encapsulated coil	1	1=DIN Standard connection	F=	01=AC220	S=
	2WS1	02=2.0	C=100	Normally Open	2=1/4"	2=SS304	E=EPDM		2		F class	AC230	Manual switch
	STP	03=3.0	D=125		3=3/8"	3=SS316	V=VITC	A=	3	2=Lead connection 25cm	H=	AC110	X=Signal light
	2W	04=4.0	E=150	1=	4=1/2"	4=	F=PTFE	Iron-clad coil	4		H class	AC120	
	ZS	05=5.0	A1=0.8	Normally Open	5=3/4"	cast iron	Q=	S=	5	3=Knob waterproof connection		03=AC36V	N=NPT (American standard)
	DF	06=6.0	A2=1.2		6=1"	5=	SILICA GEL	Waterproof wire	6			04=AC24V	
	STGY	07=7.0	A3=1.5		7=1 1/4"	stainless steel	H=HNBR	M=Pulse magnetic holding coil	7	4=Lead connection 90cm		05=AC48V	
	ZCM	08=8.0	A4=2.5		8=1 1/2"	6=	K=PEEK	E=Explosion proof line	8	5=		06=AC380V	
	STM	09=0.9	A5=3.5		9=2"	aluminum			9	Connector connection		11=DC36V	
	STH	10=10.0	A6=4.5		F=Flange	7=plastic			A			12=DC24V	
	STGT	11=11.0	A7=5.5		connection	8=PTFE			B			13=DC12V	
	STGV	12=12.0			K=	9=UPVC			C			14=DC48V	
		13=13.0			Fast plug-in	A=CPVC			D			15=DC6V	
		15=15.0			Z=Mounting	P=nylon			E			16=DC110V	
		20=20.0			bracket				F			17=DC220V	
		25=25.0			H=Union								
		32=32.0											
		40=40.0											
		50=50.0											
		A=65.0											

◆ Flow calculation method

◆ 1、Liquid(volume)

$$Q=14.28Cv \frac{\sqrt{P_1-P_2}}{\sqrt{G}}$$

Note:Don't consider for viscosity influence less than 20mm²/S

◆ 2、Gas (Volume)

$$Q=198.3CvP_1 \cdot \frac{1}{\sqrt{G}} (P_2 \leq \frac{P_1}{1.89})$$

$$Q=396.6v\sqrt{\Delta P \cdot P_2} \cdot \frac{1}{\sqrt{G}} (P_2 > \frac{P_1}{1.89})$$

Note: Standard atmospheric conditions:760mmHg, 15.6℃

Q:L/Min

Note:

P1: Inlet pressure kgf/cm²

P2: Outlet pressure kgf/cm²

ΔP: P1-P2

G: Specific Gravity (Water=1, Air=1)

Cv: Flow Coefficient Cv≈1.16x Kv Kv≈0.853x Cv

◆ Commonly Used Pressure Units Conversion

◆ 1kgf/cm²=1bar=0.1MPa=100KPa=14.5PSI

◆ Commonly Used Seal material review

(In different places of the dynamic situation use, so relevant data is only for reference)

◆ 1、NBR

Main used for diaphragm, O rings and seal material, Suitable for air, gas, liquid water, light oil etc.

Fluid temperature -18℃ to 80℃

◆ 2、EPDM

Main used the place the Temperature range above NBR, (Such as hot water.low pressure steam) suitable for the most of gas, liquid water.Fluid temperature -20℃ to 139℃

◆ 3、VITON

Main used the place where NBR、EPDM can not be applied. Suitable for most of the gas, liquid water, gasoline, solvent etc. Fluid temperature -20℃ to 169℃

◆ 4、TEFLON

Almost it can suitable for all fluid media. But as dynamic seal material, it will be leakage especially the media is gas.

2WS1 series Brass Direct lifting diaphragm solenoid valve 2/2 way normally closed type



- Features:**
- 2/2 way direct lifting diaphragm type
 - 0-10bar
 - Flow channel 15-50mm
 - Detachable repair
 - Sealing material: NBR rubber - EPDM rubber - fluoro rubber - specific material
 - Suitable for water, air, water vapor, light oil, natural gas, etc.
 - Provide IP65 three-pole connector in accordance with UNI ISO 4400 (DIN 43650A) / lead connection / explosion-proof coil



Product Description

The products are opened when powered on and closed when powered off. Being produced in series, the products have small volume, compact structure, large flow and wide application.

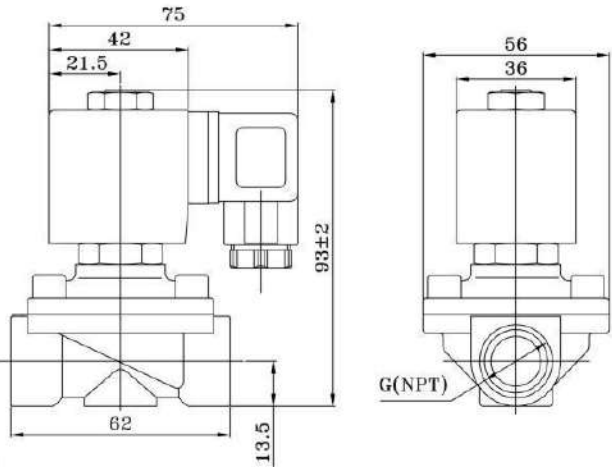
General characteristics

Body material	Brass		
Sealing material	NBR	EPDM	VITON
Temperature	80°C	140°C	150°C
Insulation grade	H		
Voltage	220-230VAC 50-60Hz	100-120VAC 60Hz	12-24DC
Power	22VA	22VA	17W
Ambient temperature	-10°C-80°C		
Installation	Installed according to the flow direction of the valve body, to improve the life and reliability, install it horizontal upward is best		
Connection	The standard is G, and the thread requirements such as NPT can be selected.		
Voltage fluctuation	± 10 %		
Can be equipped with coil	B11/B21/B31/B32		

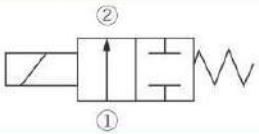
Specification sheet (internal thread interface)

Connection way	Flow aperturemm mm	KV value m³/h	Pressure difference(BAR)							DimensionsLength x width x height A x B x C	Model (voltage is 220v)X =N or E or V	Weight KG
			Minimum pressure	Maximum working pressure								
				Air, gas		Water, liquid		Light oil				
				AC	DC	AC	DC	AC	DC			
3/8'	15	2.4	0	10	7	10	7	7	4	62×56×93	2WS1-15-31X	0.85
1/2'	15	2.4	0	10	7	10	7	7	4	62×56×93	2WS1-15-41X	0.8
3/4'	20	6.3	0	10	7	10	7	7	4	73×57×114	2WS1-20-51X	1.1
1"	25	8.3	0	10	7	10	7	7	4	99×77×121	2WS1-25-61X	1.45
11/4'	32	19.4	0	10	7	10	7	7	4	112×86.5×150	2WS1-32-71X	2.3
11/2'	40	22.4	0	10	7	10	7	7	4	123×94×160	2WS1-40-81X	2.9
2"	50	34.8	0	10	7	10	7	7	4	165×123×176	2WS1-50-91X	4.8

Overall dimension drawing



Electrical symbols



Coil picture



2WS1 series stainless steel Direct lifting diaphragm solenoid valve 2/2 way normally closed type



- Features:**
- 2/2way direct lifting diaphragm
 - 0-10bar
 - Flow channel 15-50mm
 - Detachable repair
 - Sealing material: NBR rubber - EPDM rubber - fluoro rubber - specific material
 - Suitable for water, air, water vapor, light oil, natural gas, etc.
 - Provide IP65 three-pole connector in accordance with UNI ISO 4400 (DIN 43650A) / lead connection / explosion-proof coil



Product Description

The products are opened when powered on and closed when powered off. Being produced in series, the products have small volume, compact structure, large flow and wide application.

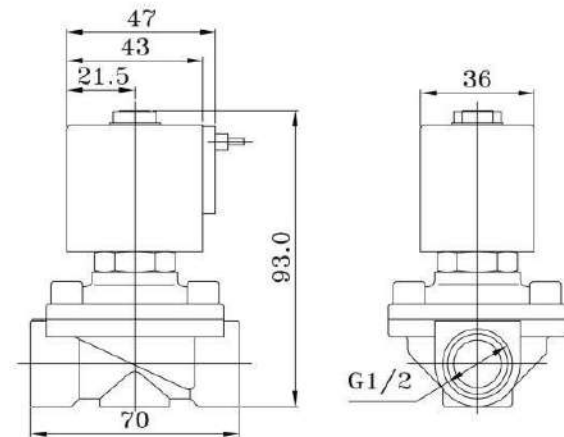
General characteristics

Body material	Stainless steel		
Sealing material	NBR	EPDM	VITON
Temperature	80°C	140°C	150°C
Insulation grade	H		
Voltage	220-230VAC 50-60Hz	100-120VAC 60Hz	12-24DC
Power	22VA	22VA	17W
Ambient temperature	-10°C-80°C		
Installation	Installed according to the flow direction of the valve body, to improve the life and reliability, install it horizontal upward is best		
Connection	The standard is G, and the thread requirements such as NPT can be selected.		
Voltage fluctuation	± 10 %		
Can be equipped with coil	B11/B21/B31/B32		

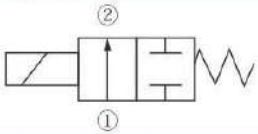
Specification sheet (internal thread interface)

Connection way	Flow aperturemm mm	KV value m³/h	Minimum pressure	Pressure difference(BAR)						DimensionsLength x width x height A x B x C	Model (voltage is 220v)X =N or E or V	Weight KG
				Maximum working pressure								
				Air, gas		Water, liquid		Light oil				
				AC	DC	AC	DC	AC	DC			
3/8"	15	2.4	0	10	7	10	7	7	4	70×57×100	2WS1-15-32X	0.85
1/2"	15	2.4	0	10	7	10	7	7	4	70×57×100	2WS1-15-42X	0.8
3/4"	20	6.3	0	10	7	10	7	7	4	72×57×107	2WS1-20-52X	1.1
1"	25	8.3	0	10	7	10	7	7	4	98×76×115	2WS1-25-62X	1.45
1 1/4"	32	19.4	0	10	7	10	7	7	4	112×86.5×150	2WS1-32-72X	2.3
1 1/2"	40	22.4	0	10	7	10	7	7	4	123×94×160	2WS1-40-82X	2.9
2"	50	34.8	0	10	7	10	7	7	4	165×123×176	2WS1-50-92X	4.8

Overall dimension drawing



Electrical symbols



Coil picture



ZS series Brass Direct lifting diaphragm solenoid valve 2/2 way normally closed type



Features:

- 2/2 way direct lifting diaphragm type
- 0-10bar
- Flow channel 15-50mm
- Detachable repair
- Sealing material: NBR rubber - EPDM rubber - fluoro rubber -specific material
- Suitable for water, air, water vapor, light oil, natural gas, etc.
- Provide IP65 three-pole connector in accordance with UNI ISO 4400 (DIN 43650A) / explosion-proof coil



Product Description

The products are opened when powered on and closed when powered off. Being produced in series, the products have small volume, compact structure, large flow and wide application.

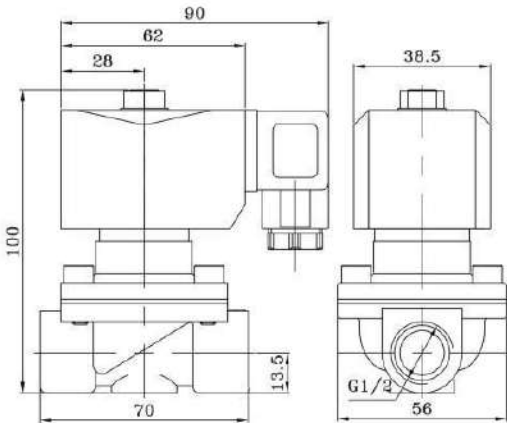
General characteristics

Body material	Brass		
Sealing material	NBR	EPDM	VITON
Temperature	80°C	140°C	150°C
Insulation grade	H		
Voltage	220-230VAC 50-60Hz	100-120VAC 60Hz	12-24DC
Power	15-28VA	15-28VA	11-20W
Ambient temperature	-10°C-80°C		
Installation	Installed according to the flow direction of the valve body, to improve the life and reliability, install it horizontal upward is best		
Connection	The standard is G, and the thread requirements such as NPT can be selected.		
Voltage fluctuation	±10%		
Can be equipped with coil	B41/B51		

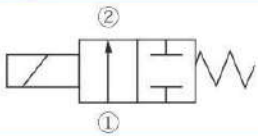
Specification sheet (internal thread interface)

Connection way	Flow aperturemm mm	KV value m³/h	Pressure difference(BAR)							DimensionsLength x width x height A x B x C	Model (voltage is 220v)X =N or E or V	Weight KG
			Minimum pressure	Maximum working pressure								
				Air, gas		Water, liquid		Light oil				
				AC	DC	AC	DC	AC	DC			
3/8'	15	2.4	0	10	7	10	7	7	4	70×56×100	ZS-15-31X	0.85
1/2'	15	2.4	0	10	7	10	7	7	4	70×56×100	ZS-15-41X	0.8
3/4'	20	6.3	0	10	7	10	7	7	4	68×57×107	ZS-20-51X	1.1
1"	25	8.3	0	10	7	10	7	7	4	98×76×115	ZS-25-61X	1.45
11/4'	32	19.4	0	10	7	10	7	7	4	112×86.5×150	ZS-32-71X	2.3
11/2'	40	22.4	0	10	7	10	7	7	4	123×94×160	ZS-40-81X	2.9
2"	50	34.8	0	10	7	10	7	7	4	165×123×176	ZS-50-91X	4.8

Overall dimension drawing



Electrical symbols



Coil picture



ZS series stainless steel Direct lifting diaphragm solenoid valve 2/2 way normally closed type



Features:

- 2/2way direct lifting diaphragm
- 0-10bar
- Flow channel 15-50mm
- Detachable repair
- Sealing material: NBR rubber - EPDM rubber - fluoro rubber- specific material
- Suitable for water, air, water vapor, light oil, natural gas, etc.
- Provide IP65 three-pole connector in accordance with UNI ISO 4400 (DIN 43650A) / explosion-proof coil



Product Description

The products are opened when powered on and closed when powered off. Being produced in series, the products have small volume, compact structure, large flow and wide application.

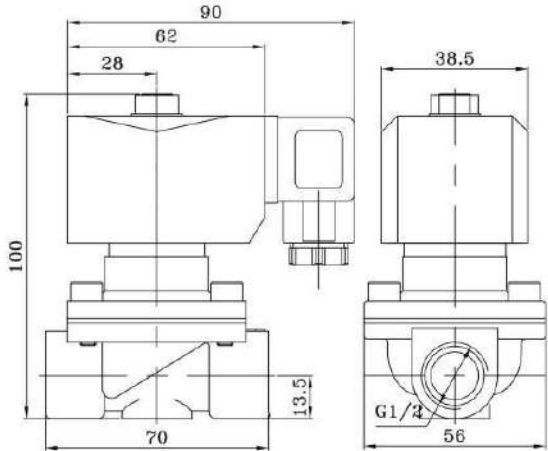
General characteristics

Body material	Stainless steel		
Sealing material	NBR	EPDM	VITON
Temperature	80°C	140°C	150°C
Insulation grade	H		
Voltage	220-230VAC 50-60Hz	100-120VAC 60Hz	12-24DC
Power	15-28VA	15-28VA	11-20W
Ambient temperature	-10°C-80°C		
Installation	Installed according to the flow direction of the valve body, to improve the life and reliability, install it horizontal upward is best		
Connection	The standard is G, and the thread requirements such as NPT can be selected.		
Voltage fluctuation	±10%		
Can be equipped with coil	B41/B51		

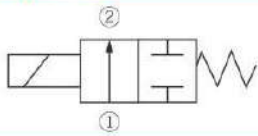
Specification sheet (internal thread interface)

Connection way	Flow aperturemm mm	KV value m³/h	Pressure difference(BAR)							DimensionsLength x width x height A x B x C	Model (voltage is 220v)X =N or E or V	Weight KG
			Minimum pressure	Maximum working pressure								
				Air, gas		Water, liquid		Light oil				
				AC	DC	AC	DC	AC	DC			
3/8"	15	2.4	0	10	7	10	7	7	4	70×56×100	ZS-15-32X	0.85
1/2"	15	2.4	0	10	7	10	7	7	4	70×56×100	ZS-15-42X	0.8
3/4"	20	6.3	0	10	7	10	7	7	4	72×56×107	ZS-20-52X	1.1
1"	25	8.3	0	10	7	10	7	7	4	98×76×106	ZS-25-62X	1.45
1 1/4"	32	19.4	0	10	7	10	7	7	4	112×86.5×150	ZS-32-72X	2.3
1 1/2"	40	22.4	0	10	7	10	7	7	4	123×94×160	ZS-40-82X	2.9
2"	50	34.8	0	10	7	10	7	7	4	165×123×176	ZS-50-92X	4.8

Overall dimension drawing



Electrical symbols



Coil picture



ZS series stainless steel Flange Direct lifting diaphragm solenoid valve 2/2 way normally closed type



Features:

- 2/2 way direct lifting diaphragm type
- 0-10bar
- Flow channel 15-50mm
- Detachable repair
- Sealing material: NBR rubber - EPDM rubber - fluoro rubber - specific material
- Suitable for water, air, water vapor, light oil, natural gas, etc.
- Provide IP65 three-pole connector in accordance with UNI ISO 4400 (DIN 43650A) / explosion-proof coil



Product Description

The products are opened when powered on and closed when powered off. Being produced in series, the products have small volume, compact structure, large flow and wide application.

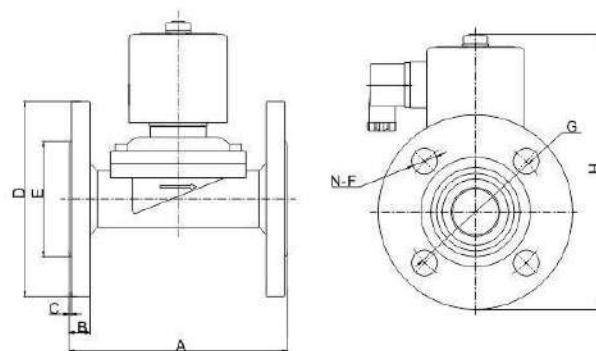
General characteristics

Body material	Stainless steel		
Sealing material	NBR	EPDM	VITON
Temperature	80°C	140°C	150°C
Insulation grade	H		
Voltage	220-230VAC 50-60Hz	100-120VAC 60Hz	12-24DC
Power	15-28VA	15-28VA	11-20W
Ambient temperature	-10°C-80°C		
Installation	Installed according to the flow direction of the valve body, to improve the life and reliability, install it horizontal upward is best		
Connection	The standard is G, and the thread requirements such as NPT can be selected.		
Voltage fluctuation	± 10 %		
Can be equipped with coil	B41/B51/A42F		

Specification sheet (Flange interface)

Flow aperturemm mm	KV value m³/h	Pressure difference(BAR)							Model (voltage is 220v)	Weight KG
		Minimum pressure	Maximum working pressure							
			Air, gas		Water, liquid		Light oil			
			AC	DC	AC	DC	AC	DC		
15	2.1	0	10	7	10	7	7	4	ZS-15F-42X	1.8
20	5.7	0	10	7	10	7	7	4	ZS-20F-52X	2.0
25	9.6	0	10	7	10	7	7	4	ZS-25F-62X	2.9
32	22	0	10	7	10	7	7	4	ZS-32F-72X	5.1
40	27	0	10	7	10	7	7	4	ZS-40F-82X	6.1
50	35	0	10	7	10	7	7	4	ZS-50F-92X	8.2
65	43	0	10	7	6	7	3	2	ZS-65F-A2X	15.2
80	56	0	10	7	6	7	3	2	ZS-80F-B2X	18
100	68	0	10	7	6	7	3	2	ZS-100F-C2X	23.5

Overall dimension drawing



model	A	B	C	ΦD	ΦE	N-ΦF	ΦG	H
ZS-15F-42X	106	10	2	95	45	4-14	65	138
ZS-20F-52X	106	10	2	99	52	4-14	50	141
ZS-25F-62X	136	12	2	110	65	4-14	50	160
ZS-32F-72X	145	13	1	131	73	4-18	100	215
ZS-40F-82X	152	12	3	141	80	4-18	110	215
ZS-50F-92X	185	15	2	155	100	4-18	125	220
ZS-65F-A2X	250	19	3	185	118	4-18	145	308
ZS-85F-B2X	270	19	3	202	134	4-18	160	320
ZS-100F-C2X	342	21	3	222	162	8-18	180	345

ZS series Brass Direct lifting diaphragm solenoid valve 2/2 way normally open type



Features:

- 2/2way direct lifting diaphragm
- 0-5bar
- Flow channel 15-50mm
- Detachable repair
- Sealing material: NBR rubber - EPDM rubber - fluoro rubber- specific material
- Suitable for water, air, water vapor, light oil, natural gas, etc.
- Provide IP65 three-pole connector in accordance with UNI ISO 4400 (DIN 43650A) / explosion-proof coil



Product Description

The products are closed when powered on and opened when powered off. Being produced in series, the products have small volume, compact structure, large flow and wide application.

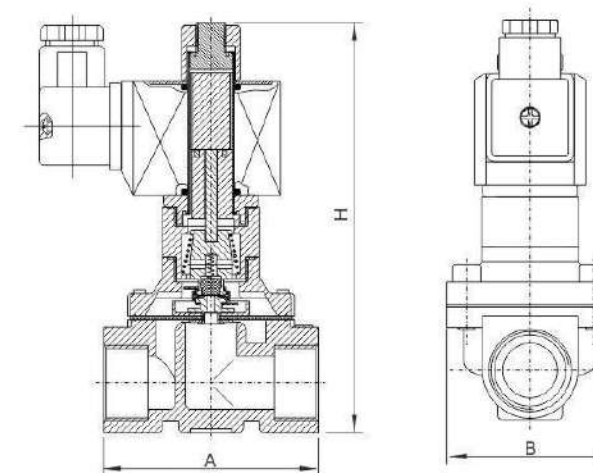
General characteristics

Body material	Brass		
Sealing material	NBR	EPDM	VITON
Temperature	80°C	140°C	150°C
Insulation grade	H		
Voltage	220-230VAC 50-60Hz	100-120VAC 60Hz	12-24DC
Power	15-28VA	15-28VA	11-20W
Ambient temperature	-10°C-80°C		
Installation	Installed according to the flow direction of the valve body, to improve the life and reliability, install it horizontal upward is best		
Connection	The standard is G, and the thread requirements such as NPT can be selected.		
Voltage fluctuation	± 10 %		
Can be equipped with coil	B41/B51/A42F		

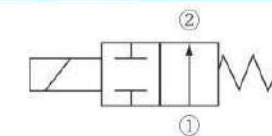
Specification sheet (internal thread interface)

Connection way	Flow aperturemm mm	KV value m³/h	Pressure difference(BAR)							DimensionsLength x width x height A x B x C	Model (voltage is 220v)X =N or E or V	Weight KG
			Minimum pressure	Maximum working pressure								
				Air, gas		Water, liquid		Light oil				
				AC	DC	AC	DC	AC	DC			
3/8"	15	2.4	0	5	5	5	5	5	5	66×57×100	ZS-15K-31X	0.85
1/2"	15	2.4	0	5	5	5	5	5	5	66×57×100	ZS-15K-41X	0.8
3/4"	20	6.3	0	5	5	5	5	5	5	68×57×107	ZS-20K-51X	1.1
1"	25	8.3	0	5	5	5	5	5	5	98×76×115	ZS-25K-61X	1.45
1 1/4"	32	19.4	0	5	5	5	5	5	5	112×86.5×150	ZS-32K-71X	2.3
1 1/2"	40	22.4	0	5	5	5	5	5	5	123×94×160	ZS-40K-81X	2.9
2"	50	34.8	0	5	5	5	5	5	5	165×123×176	ZS-50K-91X	4.8

Overall dimension drawing



Electrical symbols



Coil picture



ZS series stainless steel Direct lifting diaphragm solenoid valve 2/2 way normally open type



Features:

- 2/2way direct lifting diaphragm
- 0-5bar
- Flow channel 15-50mm
- Detachable repair
- Sealing material: NBR rubber - EPDM rubber - fluoro rubber- specific material
- Suitable for water, air, water vapor, light oil, natural gas, etc.
- Provide IP65 three-pole connector in accordance with UNI ISO 4400 (DIN 43650A) / explosion-proof coil



Product Description

The products are closed when powered on and opened when powered off. Being produced in series, the products have small volume, compact structure, large flow and wide application.

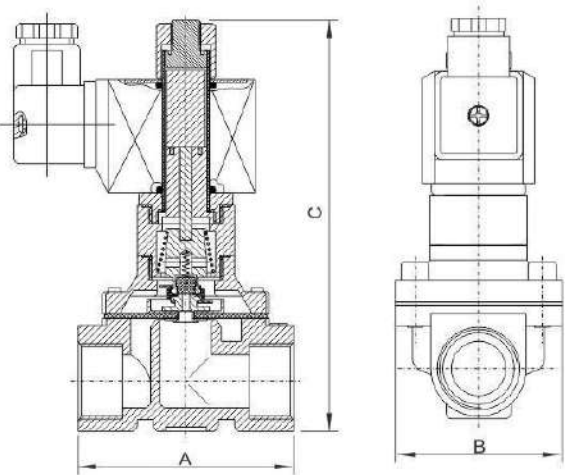
General characteristics

Body material	Stainless steel		
Sealing material	NBR	EPDM	VITON
Temperature	80℃	140℃	150℃
Insulation grade	H		
Voltage	220-230VAC 50-60Hz	100-120VAC 60Hz	12-24DC
Power	15-28VA	15-28VA	11-20W
Ambient temperature	-10℃-80℃		
Installation	Installed according to the flow direction of the valve body, to improve the life and reliability, install it horizontal upward is best		
Connection	The standard is G, and the thread requirements such as NPT can be selected.		
Voltage fluctuation	±10%		
Can be equipped with coil	B41/B51/A42F		

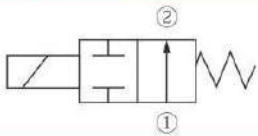
Specification sheet (Flange interface)

Connection way	Flow aperturemm mm	KV value m³/h	Pressure difference(BAR)							DimensionsLength x width x height A x B x C	Model (voltage is 220v)X =N or E or V	Weight KG
			Minimum pressure	Maximum working pressure								
				Air, gas		Water, liquid		Light oil				
				AC	DC	AC	DC	AC	DC			
3/8"	15	2.4	0	5	5	5	5	3	3	70 × 56× 100	ZS-15K-32X	0.7
1/2"	15	2.4	0	5	5	5	5	3	3	70 × 56 × 100	ZS-15K-42X	1.05
3/4"	20	6.3	0	5	5	5	5	3	3	72 × 56 × 107	ZS-20K-52X	1.2
1"	25	8.3	0	5	5	5	5	3	3	98 × 76.5 × 106	ZS-25K-62X	1.6
1 1/4"	32	19.4	0	5	5	5	5	3	3	112 × 86.5 × 180	ZS-32K-72X	2.6
1 1/2"	40	22.4	0	5	5	5	5	3	3	123 × 94 × 190	ZS-40K-82X	3.2
2"	50	34.8	0	5	5	5	5	3	3	168 × 120 × 209	ZS-50K-92X	5.2

Overall dimension drawing



Electrical symbols



Coil picture



ZS series stainless steel Flange Direct lifting diaphragm solenoid valve 2/2 way normally open type



Features:

- 2/2way direct lifting diaphragm
- 0-5bar
- Flow channel 15-50mm
- Detachable repair
- Sealing material: NBR rubber - EPDM rubber - fluoro rubber- specific material
- Suitable for water, air, water vapor, light oil, natural gas, etc.
- Provide IP65 three-pole connector in accordance with UNI ISO 4400 (DIN 43650A) / explosion-proof coil



Product Description

The products are closed when powered on and opened when powered off. Being produced in series, the products have small volume, compact structure, large flow and wide application.

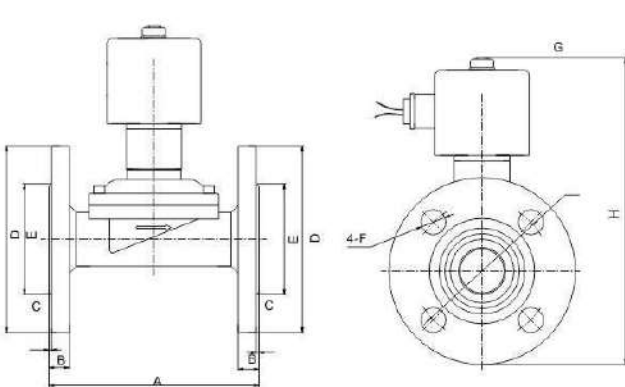
General characteristics

Body material	Stainless steel		
Sealing material	NBR	EPDM	VITON
Temperature	80℃	140℃	150℃
Insulation grade	H		
Voltage	220-230VAC 50-60Hz	100-120VAC 60Hz	12-24DC
Power	15-28VA	15-28VA	11-20W
Ambient temperature	-10℃-80℃		
Installation	Installed according to the flow direction of the valve body, to improve the life and reliability, install it horizontal upward is best		
Connection	The standard is G, and the thread requirements such as NPT can be selected.		
Voltage fluctuation	±10%		
Can be equipped with coil	B41/B51/A42F		

Specification sheet (internal thread interface)

Flow aperturemm mm	KV value m³/h	Pressure difference(BAR)							Model (voltage is 220v)X =N or E or V	Weight KG
		Minimum pressure	Maximum working pressure							
			Air, gas		Water, liquid		Light oil			
			AC	DC	AC	DC	AC	DC		
15	4.8	0	5	5	5	5	3	3	ZS-15FK-42X	1.95
20	7.6	0	5	5	5	5	3	3	ZS-15FK-52X	2.15
25	12	0	5	5	5	5	3	3	ZS-15FK-62X	3.05
32	24	0	5	5	5	5	3	3	ZS-15FK-72X	5.4
40	29	0	5	5	5	5	3	3	ZS-15FK-82X	6.4
50	48	0	5	5	5	5	3	3	ZS-15FK-92X	8.6

Overall dimension drawing



model	A	B	C	ΦD	ΦE	N-ΦF	ΦG	H
ZS-15FK-42X	106	10	2	95	45	4-14	65	138
ZS-20FK-52X	106	10	2	99	52	4-14	50	141
ZS-25FK-62X	136	12	2	110	65	4-14	50	160
ZS-32FK-72X	145	13	1	131	73	4-18	100	215
ZS-40FK-82X	152	12	3	141	80	4-18	110	215
ZS-50FK-92X	185	15	2	155	100	4-18	125	220
ZS-65FK-A2X	250	19	3	185	118	4-18	145	308
ZS-85FK-B2X	270	19	3	202	134	4-18	160	320
ZS-100FK-C2X	342	21	3	222	162	8-18	180	345

STP11 series pilot operated diaphragm
Brass 2/2 way normally closed type



Features:

- 2/2 way pilot operated diaphragm type normally closed
- 0-16bar (Max 20bar)
- Flow channel 15-50mm
- Detachable repair
- Sealing material: NBR rubber - EPDM rubber - fluoro rubber- specific material
- Suitable for water, air, water vapor, light oil, natural gas, etc.
- Provide IP65 three-pole connector in accordance with UNI ISO 4400 (DIN 43650A) / lead connection / explosion-proof coil



Product Description

The products are opened when powered on and closed when powered off. Being produced in series, the products have small volume, compact structure, large flow and wide application. Models that close slowly to prevent water hammer impact are available.

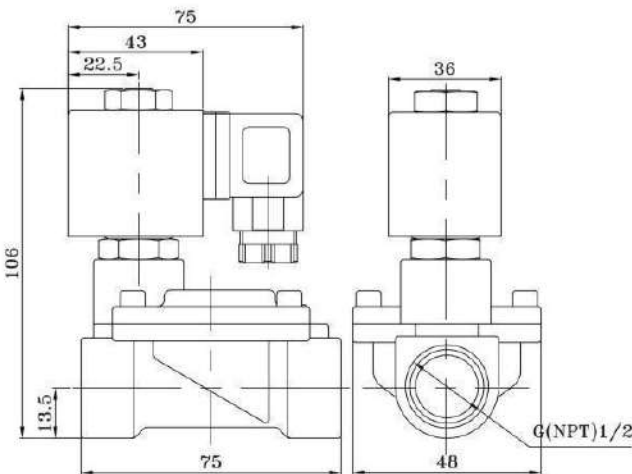
General characteristics

Body material	Brass		
Sealing material	NBR	EPDM	VITON
Temperature	80°C	140°C	150°C
Insulation grade	H		
Voltage	220-230VAC 50-60Hz	100-120VAC 60Hz	12-24DC
Power	22VA	22VA	15W / 17W
Ambient temperature	-10°C-80°C		
Installation	Installed according to the flow direction of the valve body, to improve the life and reliability, install it horizontal upward is best		
Connection	The standard is G, and the thread requirements such as NPT can be selected.		
Voltage fluctuation	± 10 %		
Can be equipped with coil	B11/B31/B32		

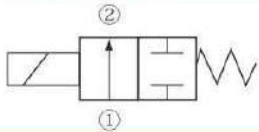
Specification sheet

Connection way	Flow aperturemm mm	KV value m³/h	Pressure difference(BAR)				DimensionsLength x width x height A x B x C	Model (voltage is 220v)X =N or E or V	Weight KG
			Minimum pressure	Maximum working pressure					
				Air, gas	Water, liquid	Light oil ≤20CST			
3/8"	15	2.4	0.3	16	16	13	75 ×48×106	STP11-15-31X	0.8
1/2 "	15	2.4	0.3	16	16	13	75 ×48×106	STP11-15-41X	0.7
3/4"	20	6.3	0.3	16	16	13	75 ×58×112	STP11-20-51X	0.9
1"	25	8.3	0.3	16	16	13	96 ×70×131	STP11-25-61X	1.4
1 1/4 "	32	19.4	0.3	16	16	13	131 ×96×146	STP11-32-71X	2.8
1 1/2 "	40	22.4	0.3	16	16	13	131 ×96×146	STP11-40-81X	2.7
2"	50	34.8	0.3	16	16	13	165 ×120×167	STP11-50-91X	4

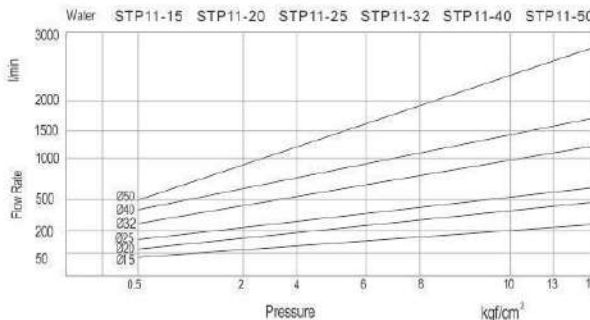
Overall dimension drawing



Electrical symbols



Coil picture



STP11 series pilot operated diaphragm
Stainless steel 2/2 way normally closed type



Features:

- 2/2 way pilot operated diaphragm type normally closed
- 0-16bar(Max 20bar)
- Flow channel 15-50mm
- Detachable repair
- Sealing material: NBR rubber - EPDM rubber - fluoro rubber- specific material
- Suitable for water, air, water vapor, light oil, natural gas, etc.
- Provide IP65 three-pole connector in accordance with UNI ISO 4400 (DIN 43650A) / lead connection / explosion-proof coil



Product Description

The products are opened when powered on and closed when powered off. Being produced in series, the products have small volume, compact structure, large flow and wide application. Models that close slowly to prevent water hammer impact are available.

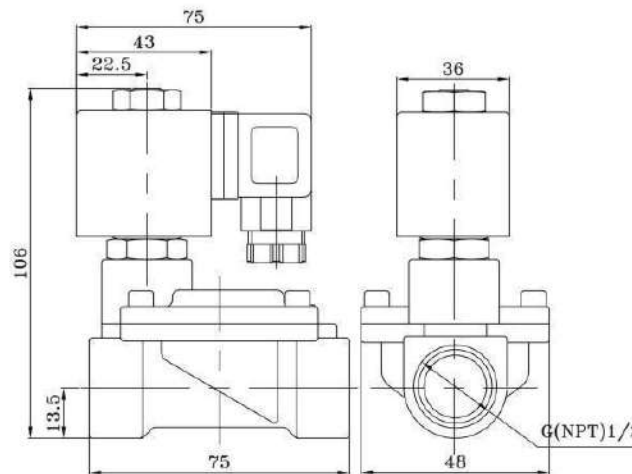
General characteristics

Body material	Stainless steel		
Sealing material	NBR	EPDM	VITON
Temperature	80°C	140°C	150°C
Insulation grade	H		
Voltage	220-230VAC 50-60Hz	100-120VAC 60Hz	12-24DC
Power	22VA	22VA	15W / 17W
Ambient temperature	-10°C-80°C		
Installation	Installed according to the flow direction of the valve body, to improve the life and reliability, install it horizontal upward is best		
Connection	The standard is G, and the thread requirements such as NPT can be selected.		
Voltage fluctuation	± 10 %		
Can be equipped with coil	B11/B31/B32		

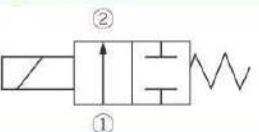
Specification sheet

Connection way	Flow aperturemm mm	KV value m³/h	Pressure difference(BAR)				DimensionsLength x width x height A x B x C	Model (voltage is 220v)X =N or E or V	Weight KG
			Minimum pressure	Maximum working pressure					
				Air, gas	Water, liquid	Light oil			
3/8"	15	1.86	0.3	16	16	13	75 × 48 × 106	STP11-15-32X	0.8
1/2"	15	2.1	0.3	16	16	13	75 × 48 × 106	STP11-15-42X	0.7
3/4"	20	5.7	0.3	16	16	13	75 × 58 × 112	STP11-20-52X	0.9
1"	25	9.6	0.3	16	16	13	96 × 70 × 131	STP11-25-62X	1.4
1 1/4"	32	22	0.3	16	16	13	131 × 96 × 146	STP11-32-72X	2.8
1 1/2"	40	27	0.3	16	16	13	131 × 96 × 146	STP11-40-82X	2.7
2"	50	35	0.3	16	16	13	165 × 120 × 167	STP11-50-92X	4

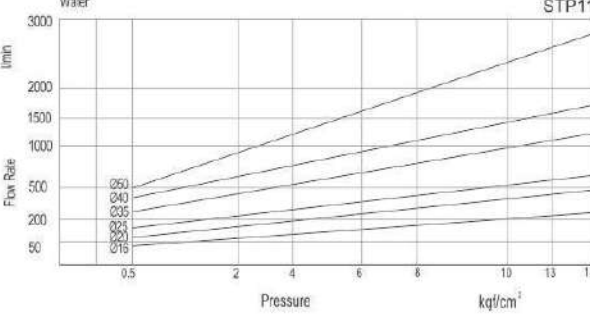
Overall dimension drawing



Electrical symbols



Coil picture



STP11 flange series pilot operated diaphragm
stainless steel 2/2way normally closed type



Features:

- 2/2 way pilot operated diaphragm type normally closed
- 0-16bar (Max 20bar)
- Flow channel 15-50mm
- Detachable repair
- Sealing material: NBR rubber - EPDM rubber - fluoro rubber- specific material
- Suitable for water, air, water vapor, light oil, natural gas, etc.
- Provide IP65 three-pole connector in accordance with UNI ISO 4400 (DIN 43650A) / lead connection / explosion-proof coil



Product Description

The products are opened when powered on and closed when powered off. Being produced in series, the products have small volume, compact structure, large flow and wide application. Models that close slowly to prevent water hammer impact are available.

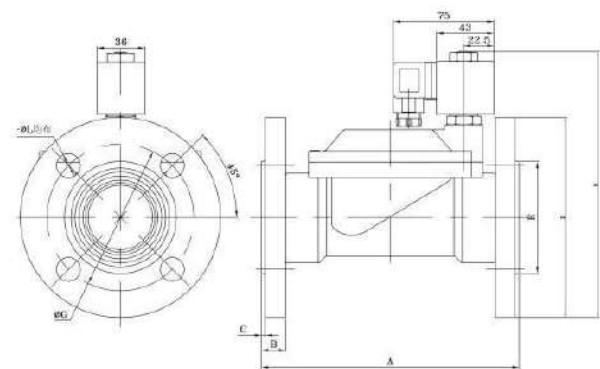
General characteristics

Body material	Stainless steel(SUS304 outstrip DN65)		
Sealing material	NBR	EPDM	VITON
Temperature	80°C	140°C	150°C
Insulation grade	H		
Voltage	220-230VAC 50-60Hz	100-120VAC 60Hz	12-24DC
Power	22VA	22VA	15W / 17W
Ambient temperature	-10°C-80°C		
Installation	Installed according to the flow direction of the valve body, to improve the life and reliability, install it horizontal upward is best		
Connection	The standard is G, and the thread requirements such as NPT can be selected.		
Voltage fluctuation	± 10 %		
Can be equipped with coil	B11/B31/B32		

Specification sheet (Flange interface)

Flow aperturemm mm	KV value m³/h	Minimum pressure	Pressure difference(BAR)						Model (voltage is 220v)X =N or E or V	Weight KG
			Maximum working pressure							
			Air, gas		Water, liquid		Light oil			
			AC	DC	AC	DC	AC	DC		
15	2.1	0.3	16	16	16	16	13	13	STP11-15F-42X	1.8
20	5.7	0.3	16	16	16	16	13	13	STP11-20F-52X	2.0
25	9.6	0.3	16	16	16	16	13	13	STP11-25F-62X	2.9
32	22	0.3	16	16	16	16	13	13	STP11-32F-72X	5.1
40	27	0.3	16	16	16	16	13	13	STP11-40F-82X	6.1
50	35	0.3	16	16	16	16	13	13	STP11-50F-92X	8.2
65	43	0.3	16	16	16	16	13	13	STP11-65F-A2X	15.2
80	56	0.3	16	16	16	16	13	13	STP11-80F-B2X	18
100	68	0.3	16	16	16	16	13	13	STP11-100F-C2X	23.5

Overall dimension drawing



model	A	B	C	ΦD	ΦE	ΦL	ΦG	H
STP11-15F-42X	134	13	2	110	58	4-14	85	172
STP11-20F-52X	160	15	2	135	74	4-18	100	187
STP11-25F-62X	134	13	2	110	58	4-14	85	160
STP11-32F-72X	160	15	2	135	74	4-18	100	175
STP11-40F-82X	160	15	2	145	84	4-18	110	180
STP11-50F-92X	200	16	2	160	88	4-18	125	207
STP11-65F-A2X	250	19	3	185	118	4-18	145	250
STP11-80F-B2X	270	19	3	202	134	4-18	160	262
STP11-100F-C2X	342	21	3	220	162	8-18	180	287

STP11 series pilot operated diaphragm
brass 2/2 way normally open type



Features:

- 2/2 way pilot operated diaphragm type normally closed
- 0-16bar(Max 20bar)
- Flow channel 15-50mm
- Detachable repair
- Sealing material: NBR rubber - EPDM rubber - fluoro rubber- specific material
- Suitable for water, air, water vapor, light oil, natural gas, etc.
- Provide IP65 three-pole connector in accordance with UNI ISO 4400 (DIN 43650A) / lead connection / explosion-proof coil



Product Description

The products are closed when powered on and opened when powered off. Being produced in series, the products have small volume, compact structure, large flow and wide application.

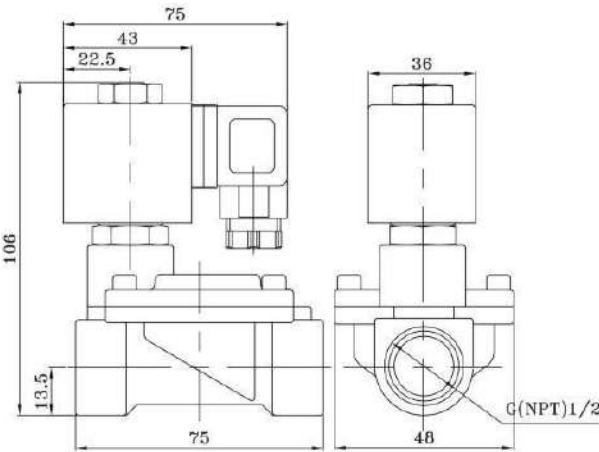
General characteristics

Body material	Brass		
Sealing material	NBR	EPDM	VITON
Temperature	80°C	140°C	150°C
Insulation grade	H		
Voltage	220-230VAC 50-60Hz	100-120VAC 60Hz	12-24DC
Power	22VA	22VA	15W / 17W
Ambient temperature	-10°C-80°C		
Installation	Installed according to the flow direction of the valve body, to improve the life and reliability, install it horizontal upward is best		
Connection	The standard is G, and the thread requirements such as NPT can be selected.		
Voltage fluctuation	± 10 %		
Can be equipped with coil	B11/B31/B32		

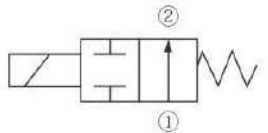
Specification sheet

Connection way	Flow aperturemm mm	KV value m³/h	Pressure difference(BAR)				DimensionsLength x width x height A x B x C	Model (voltage is 220V)X =N or E or V	Weight KG
			Minimum pressure	Maximum working pressure					
				Air, gas	Water, liquid	Light oil			
3/8"	15	1.86	0.3	16	16	13	75 × 48 × 106	STP11-15K-31X	0.8
1/2"	15	2.1	0.3	16	16	13	75 × 48 × 106	STP11-15K-41X	0.7
3/4"	20	5.7	0.3	16	16	13	75 × 58 × 112	STP11-20K-51X	0.9
1"	25	9.6	0.3	16	16	13	96 × 70 × 131	STP11-25K-61X	1.4
1 1/4"	32	22	0.3	16	16	13	131 × 96 × 146	STP11-32K-71X	2.8
1 1/2"	40	27	0.3	16	16	13	131 × 96 × 146	STP11-40K-81X	2.7
2"	50	35	0.3	16	16	13	165 × 120 × 167	STP11-50K-91X	4

Overall dimension drawing



Electrical symbols



Coil picture



STP11 pilot operated diaphragm stainless steel 2/2way normally open type



Features:

- 2/2 way pilot operated diaphragm type normally open
- 0-16bar (Max 20bar)
- Flow channel 15-50mm
- Detachable repair
- Sealing material: NBR rubber - EPDM rubber - fluoro rubber- specific material
- Suitable for water, air, water vapor, light oil, natural gas, etc.
- Provide IP65 three-pole connector in accordance with UNI ISO 4400 (DIN 43650A) / lead connection / explosion-proof coil



Product Description

The products are closed when powered on and opened when powered off. Being produced in series, the products have small volume, compact structure, large flow and wide application. Models that close slowly to prevent water hammer impact are available.

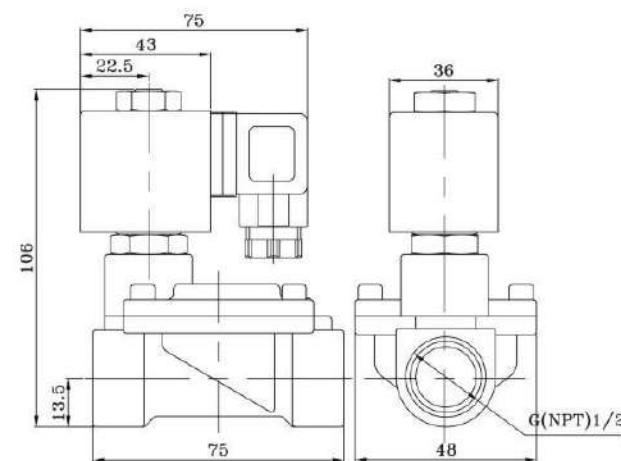
General characteristics

Body material	Stainless steel		
Sealing material	NBR	EPDM	VITON
Temperature	80°C	140°C	150°C
Insulation grade	H		
Voltage	220-230VAC 50-60Hz	100-120VAC 60Hz	12-24DC
Power	22VA	22VA	15W / 17W
Ambient temperature	-10°C-80°C		
Installation	Installed according to the flow direction of the valve body, to improve the life and reliability, install it horizontal upward is best		
Connection	The standard is G, and the thread requirements such as NPT can be selected.		
Voltage fluctuation	± 10 %		
Can be equipped with coil	B11/B31/B32		

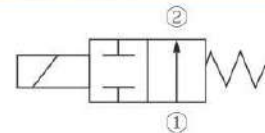
Specification sheet

Connection way	Flow aperturemm mm	KV value m³/h	Pressure difference(BAR)				DimensionsLength x width x height A x B x C	Model (voltage is 220v)X =N or E or V	Weight KG
			Minimum pressure	Maximum working pressure					
				Air, gas	Water, liquid	Light oil ≤20CST			
3/8"	15	1.86	0.3	16	16	13	75 × 48 × 106	STP11-15K-32X	0.8
1/2"	15	2.1	0.3	16	16	13	75 × 48 × 106	STP11-15K-42X	0.7
3/4"	20	5.7	0.3	16	16	13	75 × 58 × 112	STP11-20K-52X	0.9
1"	25	9.6	0.3	16	16	13	96 × 70 × 131	STP11-25K-62X	1.4
1 1/4"	32	22	0.3	16	16	13	131 × 96 × 146	STP11-32K-72X	2.8
1 1/2"	40	27	0.3	16	16	13	131 × 96 × 146	STP11-40K-82X	2.7
2"	50	35	0.3	16	16	13	165 × 120 × 167	STP11-50K-92X	4

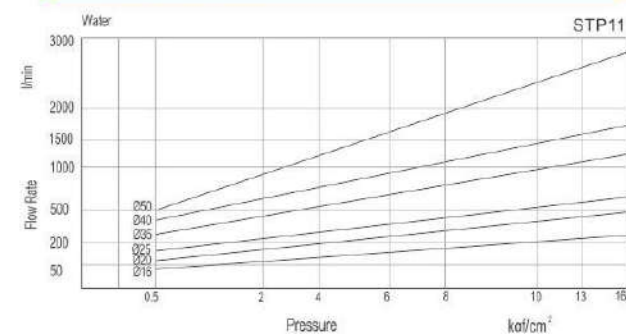
Overall dimension drawing



Electrical symbols



Coil picture



STP11 flange series pilot operated diaphragm stainless steel 2/2way normally open type



Features:

- 2/2 way pilot operated diaphragm type normally open
- 0-16bar (Max 20bar)
- Flow channel 15-50mm
- Detachable repair
- Sealing material: NBR rubber - EPDM rubber - fluoro rubber- specific material
- Suitable for water, air, water vapor, light oil, natural gas, etc.
- Provide IP65 three-pole connector in accordance with UNI ISO 4400 (DIN 43650A) / lead connection



Product Description

The products are closed when powered on and opened when powered off. Being produced in series, the products have small volume, compact structure, large flow and wide application. Models that close slowly to prevent water hammer impact are available.

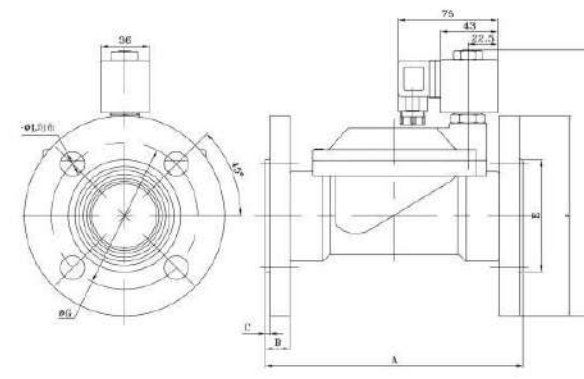
General characteristics

Body material	Stainless steel(SUS304 outstrip DN65)		
Sealing material	NBR	EPDM	VITON
Temperature	80°C	140°C	150°C
Insulation grade	H		
Voltage	220-230VAC 50-60Hz	100-120VAC 60Hz	12-24DC
Power	22VA	22VA	15W / 17W
Ambient temperature	-10°C-80°C		
Installation	Installed according to the flow direction of the valve body, to improve the life and reliability, install it horizontal upward is best		
Connection	The standard is G, and the thread requirements such as NPT can be selected.		
Voltage fluctuation	± 10 %		
Can be equipped with coil	B11/B31/B32		

Specification sheet (Flange interface)

Flow aperturemm mm	KV value m³/h	Pressure difference(BAR)							Model (voltage is 220V)X =N or E or V	Weight KG
		Minimum pressure	Maximum working pressure							
			Air, gas		Water, liquid		Light oil			
			AC	DC	AC	DC	AC	DC		
15	2.1	0.3	16	16	16	16	13	13	STP11-15FK-42X	1.8
20	5.7	0.3	16	16	16	16	13	13	STP11-20FK-52X	2.0
25	9.6	0.3	16	16	16	16	13	13	STP11-25FK-62X	2.9
32	22	0.3	16	16	16	16	13	13	STP11-32FK-72X	5.1
40	27	0.3	16	16	16	16	13	13	STP11-40FK-82X	6.1
50	35	0.3	16	16	16	16	13	13	STP11-50FK-92X	8.2
65	43	0.3	16	16	16	16	13	13	STP11-65FK-A2X	15.2
80	56	0.3	16	16	16	16	13	13	STP11-80FK-B2X	18
100	68	0.3	16	16	16	16	13	13	STP11-100FK-C2X	23.5

Overall dimension drawing



model	A	B	C	ΦD	ΦE	ΦL	ΦG	H
STP11-15F-42X	134	13	2	110	58	4-14	85	172
STP11-20F-52X	160	15	2	135	74	4-18	100	187
STP11-25F-62X	134	13	2	110	58	4-14	85	160
STP11-32F-72X	160	15	2	135	74	4-18	100	175
STP11-40F-82X	160	15	2	145	84	4-18	110	180
STP11-50F-92X	200	16	2	160	88	4-18	125	207
STP11-65F-A2X	250	19	3	185	118	4-18	145	250
STP11-80F-B2X	270	19	3	202	134	4-18	160	262
STP11-100F-C2X	342	21	3	220	162	8-18	180	287

STP21 2/2 way compact direct-acting solenoid valve normally closed type



- Features:**
- 2/2 way direct acting type normally closed
 - 0-25bar
 - Flow channel 1.0-6.0mm
 - Detachable repair
 - Sealing material: NBR rubber - EPDM rubber - fluoro rubber- PTFE - specific material
 - Suitable for water, air, water vapor, light oil, natural gas, etc.
 - Provide IP65 three-pole connector in accordance with UNI ISO 4400 (DIN 43650A) / lead connection / explosion-proof coil



Product Description

The products are opened when powered on and closed when powered off. Being produced in series, the products have small volume, compact structure, large flow and wide application.

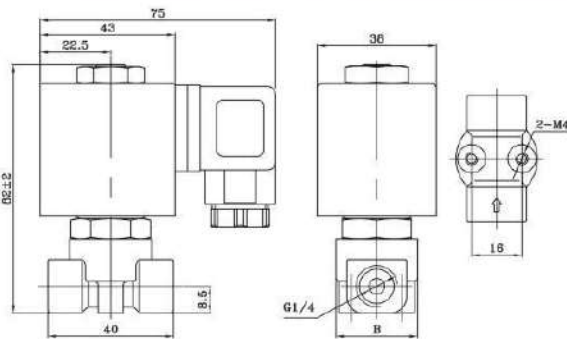
General characteristics

Body material	Brass, Stainless steel (Configurable integrated)		
Sealing material	NBR	EPDM	VITON
Temperature	80℃	140℃	150℃
Insulation grade	H		
Voltage	220-230VAC 50-60Hz	100-120VAC 60Hz	12-24DC
Power	22VA	22VA	15W / 17W
Ambient temperature	-10℃-80℃		
Installation	Installed according to the flow direction of the valve body, to improve the life and reliability, install it horizontal upward is best		
Connection	The standard is G, and the thread requirements such as NPT can be selected.		
Voltage fluctuation	± 10 %		
Can be equipped with coil	B11/B21/B31/B32/B81/E11		

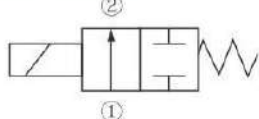
Specification sheet

Connection way	Flow aperturemm mm	KV value m³/h	Minimum pressure	Pressure difference(BAR)				Model (voltage is 220v)X=N or E or V or F	
				Maximum working pressure				Body material	
				Air, gas, Water, liquid		Light oil		brass	stainless steel
1/8"	1.0	0.02	0	30	30	25	25	STP21-01-11X	STP21-01-12X
	1.2	0.03	0	26	26	20	20	STP21-A2-11X	STP21-A2-12X
	1.5	0.06	0	20	20	15	15	STP21-A3-11X	STP21-A3-12X
	2.0	0.08	0	18	18	13	13	STP21-02-11X	STP21-02-12X
	2.5	0.13	0	15	15	10	10	STP21-A4-11X	STP21-A4-12X
	3.0	0.21	0	12	12	8	8	STP21-03-11X	STP21-03-12X
	4.0	0.35	0	10	10	6	6	STP21-04-11X	STP21-04-12X
	5.0	0.46	0	8	8	4	4	STP21-05-11X	STP21-05-12X
1/4"	1.0	0.02	0	30	30	25	25	STP21-01-21X	STP21-01-22X
	1.2	0.03	0	26	26	20	20	STP21-A2-21X	STP21-A2-22X
	1.5	0.06	0	20	20	15	15	STP21-A3-21X	STP21-A3-22X
	2.0	0.08	0	18	18	13	13	STP21-02-21X	STP21-02-22X
	2.5	0.13	0	15	15	10	10	STP21-A4-21X	STP21-A4-22X
	3.0	0.21	0	12	12	8	8	STP21-03-21X	STP21-03-22X
	4.0	0.35	0	10	10	6	6	STP21-04-21X	STP21-04-22X
	5.0	0.46	0	8	8	4	4	STP21-05-21X	STP21-05-22X
3/8"	1.0	0.02	0	30	30	25	25	STP21-01-31X	STP21-01-32X
	1.2	0.03	0	26	26	20	20	STP21-A2-31X	STP21-A2-32X
	1.5	0.06	0	20	20	15	15	STP21-A3-31X	STP21-A3-32X
	2.0	0.08	0	18	18	13	13	STP21-02-31X	STP21-02-32X
	2.5	0.13	0	15	15	10	10	STP21-A4-31X	STP21-A4-32X
	3.0	0.21	0	12	12	8	8	STP21-03-31X	STP21-03-32X
	4.0	0.35	0	10	10	6	6	STP21-04-31X	STP21-04-32X
	5.0	0.46	0	8	8	4	4	STP21-05-31X	STP21-05-32X

Overall dimension drawing



Electrical symbols



Coil picture



STP21 2/2way compact direct-acting solenoid valve normally open type



- Features:**
- 2/2 way direct acting type normally closed
 - 0-25bar
 - Flow channel 1.0-6.0mm
 - Detachable repair
 - Sealing material: NBR rubber - EPDM rubber - fluoro rubber- PTFE - specific material
 - Suitable for water, air, water vapor, light oil, natural gas, etc.
 - Provide IP65 three-pole connector in accordance with UNI ISO 4400 (DIN 43650A) / lead connection / explosion-proof coil



Product Description

The products are closed when powered on and opened when powered off. Being produced in series, the products have small volume, compact structure, large flow and wide application.

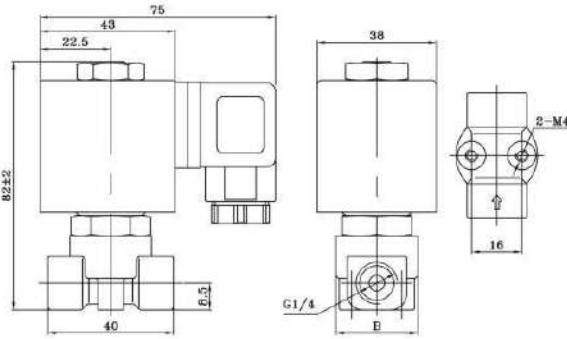
General characteristics

Body material	Brass, Stainless steel		
Sealing material	NBR	EPDM	VITON
Temperature	80℃	140℃	150℃
Insulation grade	H		
Voltage	220-230VAC 50-60Hz	100-120VAC 60Hz	12-24DC
Power	22VA	22VA	15W / 17W
Ambient temperature	-10℃-80℃		
Installation	Installed according to the flow direction of the valve body, to improve the life and reliability, install it horizontal upward is best		
Connection	The standard is G, and the thread requirements such as NPT can be selected.		
Voltage fluctuation	± 10 %		
Can be equipped with coil	B11/B21/B31/B32/E11		

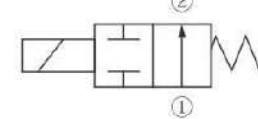
Specification sheet

Connection way	Flow aperturemm mm	KV value m³/h	Minimum pressure	Pressure difference(BAR)				Model (voltage is 220v)X=N or E or V or F	
				Maximum working pressure				Body material	
				Air, gas, Water, liquid		Light oil		brass	stainless steel
1/8"	1.0	0.02	0	30	30	25	25	STP21-01K-11X	STP21-01K-12X
	1.2	0.03	0	26	26	20	20	STP21-A2K-11X	STP21-A2K-12X
	1.5	0.06	0	20	20	15	15	STP21-A3K-11X	STP21-A3K-12X
	2.0	0.08	0	18	18	13	13	STP21-02K-11X	STP21-02K-12X
	2.5	0.13	0	15	15	10	10	STP21-A4K-11X	STP21-A4K-12X
	3.0	0.21	0	12	12	8	8	STP21-03K-11X	STP21-03K-12X
	4.0	0.35	0	10	10	6	6	STP21-04K-11X	STP21-04K-12X
	5.0	0.46	0	8	8	4	4	STP21-05K-11X	STP21-05K-12X
1/4"	1.0	0.02	0	30	30	25	25	STP21-01K-21X	STP21-01K-22X
	1.2	0.03	0	26	26	20	20	STP21-A2K-21X	STP21-A2K-22X
	1.5	0.06	0	20	20	15	15	STP21-A3K-21X	STP21-A3K-22X
	2.0	0.08	0	18	18	13	13	STP21-02K-21X	STP21-02K-22X
	2.5	0.13	0	15	15	10	10	STP21-A4K-21X	STP21-A4K-22X
	3.0	0.21	0	12	12	8	8	STP21-03K-21X	STP21-03K-22X
	4.0	0.35	0	10	10	6	6	STP21-04K-21X	STP21-04K-22X
	5.0	0.46	0	8	8	4	4	STP21-05K-21X	STP21-05K-22X
3/8"	1.0	0.02	0	30	30	25	25	STP21-01K-31X	STP21-01K-32X
	1.2	0.03	0	26	26	20	20	STP21-A2K-31X	STP21-A2K-32X
	1.5	0.06	0	20	20	15	15	STP21-A3K-31X	STP21-A3K-32X
	2.0	0.08	0	18	18	13	13	STP21-02K-31X	STP21-02K-32X

Overall dimension drawing



Electrical symbols



Coil picture



STP31 2/2 way compact pilot operated solenoid valve normally closed type



Features:

- ◆ 2/2 way pilot operated type normally closed
- ◆ 0-16bar
- ◆ Flow channel 12.0mm
- ◆ Detachable repair
- ◆ Sealing material: NBR rubber - EPDM rubber - fluoro rubber - specific material
- ◆ Suitable for water, air, water vapor, light oil, natural gas, etc.
- ◆ Provide IP65 three-pole connector in accordance with UNI ISO 4400 (DIN 43650A) / lead connection / explosion-proof coil



Product Description

The products are opened when powered on and closed when powered off. Being produced in series, the products have small volume, compact structure, large flow and wide application.

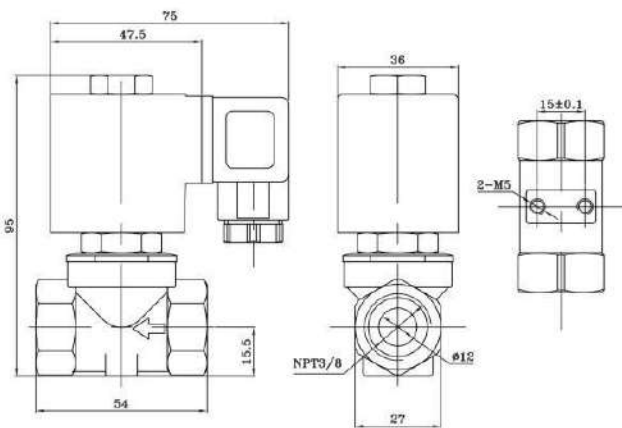
General characteristics

Body material	Brass, Stainless steel		
Sealing material	NBR	EPDM	VITON
Temperature	80°C	140°C	150°C
Insulation grade	H		
Voltage	220-230VAC 50-60Hz	100-120VAC 60Hz	12-24DC
Power	22VA	22VA	15W / 17W
Ambient temperature	-10°C-80°C		
Installation	Installed according to the flow direction of the valve body, to improve the life and reliability, install it horizontal upward is best		
Connection	The standard is G, and the thread requirements such as NPT can be selected.		
Voltage fluctuation	± 10 %		
Can be equipped with coil	B11/B21/B31/B32/E11		

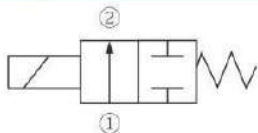
Specification sheet

Connection way	Flow aperturemm mm	KV value m³/h	Pressure difference(BAR)							Model (voltage is 220v)X=N or E or V		Weight KG
			Minimum pressure	Maximum working pressure						Body material		
				Air, gas		Water, liquid		Light oil				
				AC	DC	AC	DC	AC	DC	brass	stainless steel	
1/4"	12	2.1	0	16	16	16	16	13	13	STP-12-21X	STP-12-22X	0.51
3/8"	12	2.1	0	16	16	16	16	13	13	STP-12-31X	STP-12-32X	0.49
1/2"	12	2.1	0	16	16	16	16	13	13	STP-12-41X	STP-12-42X	0.46

Overall dimension drawing



Electrical symbols



Coil picture



STP41 2/2way compact direct-acting solenoid valve normally open type



Features:

- ◆ 2/2 way direct acting type normally closed
- ◆ 0-25bar
- ◆ Flow channel 1.0-6.0mm
- ◆ Detachable repair
- ◆ Sealing material: NBR rubber - EPDM rubber - fluoro rubber- PTFE - specific material
- ◆ Suitable for water, air, water vapor, light oil, natural gas, etc.
- ◆ Provide IP65 three-pole connector in accordance with UNI ISO 4400 (DIN 43650A) / lead connection / explosion-proof coil



Product Description

The products are closed when powered on and opened when powered off. Being produced in series, the products have small volume, compact structure, large flow and wide application.

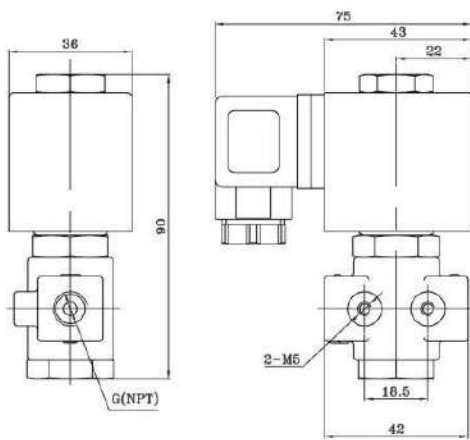
General characteristics

Body material	Brass, Stainless steel		
Sealing material	NBR	EPDM	VITON
Temperature	80°C	140°C	150°C
Insulation grade	H		
Voltage	220-230VAC 50-60Hz	100-120VAC 60Hz	12-24DC
Power	22VA	22VA	15W / 17W
Ambient temperature	-10°C-80°C		
Installation	Installed according to the flow direction of the valve body, to improve the life and reliability, install it horizontal upward is best		
Connection	The standard is G, and the thread requirements such as NPT can be selected.		
Voltage fluctuation	± 10 %		
Can be equipped with coil	B11/B21/B31/B32/E11		

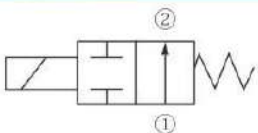
Specification sheet

Connection way	Flow aperturemm mm	KV value m³/h	Minimum pressure	Pressure difference(BAR)				Model (voltage is 220v)X=N or E or V or F	
				Maximum working pressure				Body material	
				Air, gas, Water, liquid		Light oil			
				AC	DC	AC	DC	brass	stainless steel
1/8"	1.0	0.02	0	30	30	25	25	STP41-01K-11X	STP41-01K-12X
	1.2	0.03	0	26	26	20	20	STP41-A2K-11X	STP41-A2K-12X
	1.5	0.06	0	20	20	15	15	STP41-A3K-11X	STP41-A3K-12X
	2.0	0.08	0	18	18	13	13	STP41-02K-11X	STP41-02K-12X
	2.5	0.13	0	15	15	10	10	STP41-A4K-11X	STP41-A4K-12X
	3.0	0.21	0	12	12	8	8	STP41-03K-11X	STP41-03K-12X
1/4"	4.0	0.35	0	10	10	6	6	STP41-04K-11X	STP41-04K-12X
	1.0	0.02	0	30	30	25	25	STP41-01K-21X	STP41-01K-22X
	1.2	0.03	0	26	26	20	20	STP41-A2K-21X	STP41-A2K-22X
	1.5	0.06	0	20	20	15	15	STP41-A3K-21X	STP41-A3K-22X
	2.0	0.08	0	18	18	13	13	STP41-02K-21X	STP41-02K-22X
	2.5	0.13	0	15	15	10	10	STP41-A4K-21X	STP41-A4K-22X
	3.0	0.21	0	12	12	8	8	STP41-03K-21X	STP41-03K-22X
	4.0	0.35	0	10	10	6	6	STP41-04K-21X	STP41-04K-22X

Overall dimension drawing



Electrical symbols



Coil picture



STP51 2/2 way compact direct-acting solenoid valve normally closed type



Features:

- 2/2 way direct acting type normally closed
- 0-16bar
- Flow channel 10-12mm
- Detachable repair
- Sealing material: NBR rubber - EPDM rubber - fluoro rubber- specific material
- Suitable for water, air, water vapor, light oil, natural gas, etc.
- Provide IP65 three-pole connector in accordance with UNI ISO 4400 (DIN 43650A) / lead connection



Product Description

The products are opened when powered on and closed when powered off. Being produced in series, the products have small volume, compact structure, large flow and wide application.

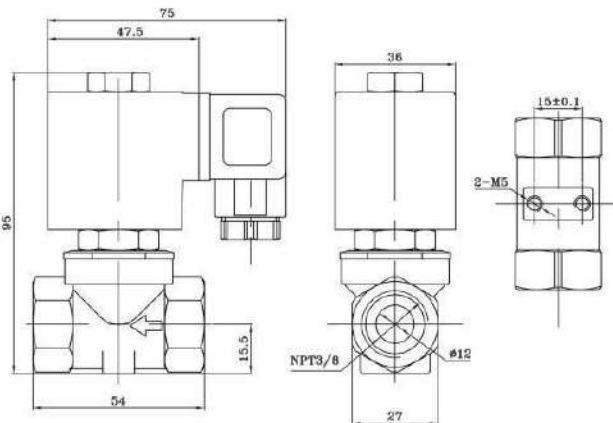
General characteristics

Body material	Brass, Stainless steel		
Sealing material	NBR	EPDM	VITON
Temperature	80°C	140°C	150°C
Insulation grade	H		
Voltage	220-230VAC 50-60Hz	100-120VAC 60Hz	12-24DC
Power	22VA	22VA	15W / 17W
Ambient temperature	-10°C-80°C		
Installation	Installed according to the flow direction of the valve body, to improve the life and reliability, install it horizontal upward is best		
Connection	The standard is G, and the thread requirements such as NPT can be selected.		
Voltage fluctuation	± 10 %		
Can be equipped with coil	B11/B21/B31/B32/E11		

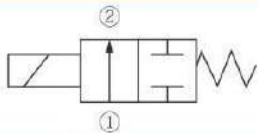
Specification sheet

Connection way	Flow aperturemm mm	KV value m³/h	Pressure difference(BAR)							Model (voltage is 220v)X=N or E or V		Weight KG
			Minimum pressure	Maximum working pressure						Body material		
				Air, gas		Water, liquid		Light oil				
				AC	DC	AC	DC	AC	DC	brass	stainless steel	
1/4"	10	1.9	0	16	10	16	10	13	10	STP51-10-21X	STP51-10-22X	0.51
	12	2.1	0	16	10	16	10	13	10	STP51-12-21X	STP51-12-22X	0.51
3/8"	10	1.9	0	16	10	16	10	13	10	STP51-10-31X	STP51-10-32X	0.49
	12	2.1	0	16	10	16	10	13	10	STP51-12-31X	STP51-12-32X	0.49
1/2"	10	1.9	0	16	10	16	10	13	10	STP51-10-41X	STP51-10-42X	0.46
	12	2.1	0	16	10	16	10	13	10	STP51-12-41X	STP51-12-42X	0.46

Overall dimension drawing



Electrical symbols



Coil picture



DF cast iron flange series liquid solenoid valve



Features:

- 2/2 way
- 0-10bar
- Flow channel 65-150mm
- Detachable repair
- Sealing material: NBR rubber - EPDM rubber - fluoro rubber
- Suitable for water
- Provide IP65 three-pole connector in accordance with UNI ISO 4400 (DIN 43650A) (Normally open type)



Product Description

The products are opened when powered on and closed when powered off. Being produced in series, the products have small volume, compact structure, large flow and wide application.

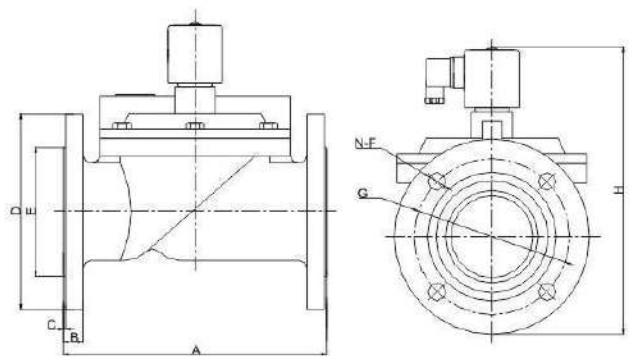
General characteristics

Body material	Cast iron		
Sealing material	NBR	EPDM	VITON
Temperature	80°C	140°C	150°C
Insulation grade	H		
Voltage	220-230VAC 50-60Hz	100-120VAC 60Hz	12-24DC
Power	22VA	22VA	18W
Ambient temperature	-10°C-80°C		
Installation	Installed according to the flow direction of the valve body, to improve the life and reliability, install it horizontal upward is best		
Connection	The standard is G, and the thread requirements such as NPT can be selected.		
Voltage fluctuation	± 10 %		
Can be equipped with coil	A21		

Specification sheet (Flange interface)

Connection way	Flow aperturemm mm	Pressure difference(BAR)					Model (voltage is 220V)X=N or E or V
		Minimum pressure	Maximum working pressure				
			Air, gas		Water, liquid		
			AC	DC	AC	DC	
65F	65	0	10	8	10	8	DF-65F-A4X
80F	80	0	10	8	10	8	DF-80F-B4X
100F	100	0	10	8	10	8	DF-100F-C4X
125F	125	0	10	8	10	8	DF-125F-D4X
150F	150	0	10	8	10	8	DF-150F-E4X

Overall dimension drawing



model	A	B	C	ΦD	ΦE	ΦF	ΦG	H	N
DF-65F-A4X	250	20	3	185	118	18	145	260	4
DF-80F-B4X	270	18	2	200	132	18	160	275	4
DF-100F-C4X	350	20	2	220	160	18	180	310	8
DF-125F-D4X	400	25	3	250	184	18	210	380	8
DF-150F-E4X	450	24	3	285	212	22	240	405	8

2W series Brass Direct lifting diaphragm solenoid valve 2/2 way normally closed type



Features:

- 2/2 way
- 0-8bar
- Flow channel 2.5-50mm
- Detachable repair
- Sealing material: NBR rubber - EPDM rubber - fluoro rubber- specific material
- Suitable for water, air, water vapor, light oil, natural gas, etc.
- lead connection



Product Description

The products are opened when powered on and closed when powered off. Being produced in series, the products have small volume, compact structure, large flow and wide application.

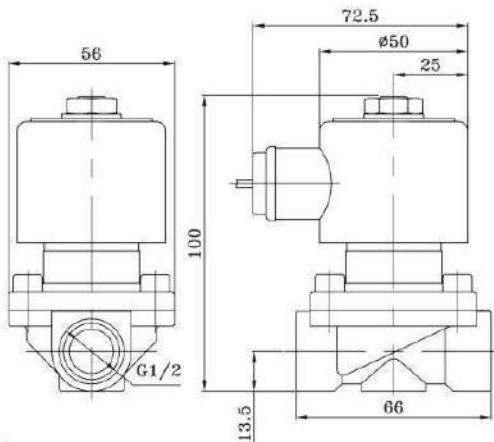
General characteristics

Body material	Brass		
Sealing material	NBR	EPDM	VITON
Temperature	80°C	140°C	150°C
Insulation grade	H		
Voltage	220-230VAC 50-60Hz	100-120VAC 60Hz	12-24DC
Power	8-20VA	8-20VA	8-20W
Ambient temperature	-10°C-80°C		
Installation	Installed according to the flow direction of the valve body, to improve the life and reliability, install it horizontal upward is best		
Connection	The standard is G, and the thread requirements such as NPT can be selected.		
Voltage fluctuation	± 10 %		
Can be equipped with coil	A12/A32/A42		

Specification sheet

Connection way	Flow aperturemm mm	KV value m³/h	Pressure difference(BAR)							Dimensions Length x width x height A x B x C	Model (voltage is 220v) X=N or E or V
			Minimum pressure	Maximum working pressure							
				Air, gas		Water, hot water		Light oil			
				AC	DC	AC	DC	AC	DC		
1/4"	2.5	0.23	0	8	7	8	7	7	7	50×40.5×98	2W-A4-21
3/8"	4.0	0.6	0	8	7	8	7	7	7	50×40.5×98	2W-04-31
3/8"	15	1.86	0	8	7	8	7	7	4	66×56×100	2W-15-31
1/2"	15	2.1	0	8	7	8	7	7	4	66×56×100	2W-15-41
3/4"	20	5.7	0	8	7	8	7	7	4	73×57×123.5	2W-20-51
1"	25	9.6	0	8	7	8	7	7	4	99×73.5×134.5	2W-25-61
1 1/4"	32	22	0	8	7	8	7	7	4	112×95×172	2W-32-71
1 1/2"	40	27	0	8	7	8	7	7	4	123×95×172	2W-40-81
2"	50	35	0	8	7	8	7	7	4	168×123×209	2W-50-91

Overall dimension drawing



model	A	B	C	G	Weight KG
2W-A4-21X	50	40.5	98	1/4"	0.64
2W-04-31X	50	40.5	98	3/8"	0.68
2W-15-31X	66	56	100	3/8"	0.9
2W-15-41X	66	56	100	1/2"	0.9
2W-20-51X	73	57	123.5	3/4"	1.0
2W-25-61X	99	73.5	134.5	1"	1.5
2W-32-71X	112	95	172	1 1/4"	2.4
2W-40-81X	123	95	172	1 1/2"	2.7
2W-50-91X	168	123	209	2"	4.5

2W series stainless steel Direct lifting diaphragm solenoid valve 2/2 way normally closed type



Features:

- 2/2way direct lifting diaphragm type normally closed
- 0-8bar
- Flow channel 15-100mm
- Detachable repair
- Sealing material: NBR rubber - EPDM rubber - fluoro rubber- specific material
- Suitable for water, air, water vapor, light oil, natural gas, etc.
- lead connection



Product Description

The products are opened when powered on and closed when powered off. Being produced in series, the products have small volume, compact structure, large flow and wide application.

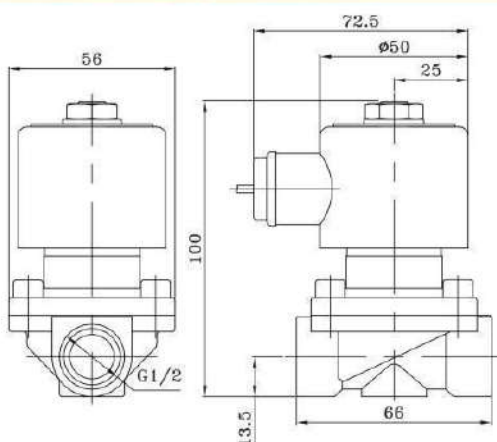
General characteristics

Body material	Stainless steel		
Sealing material	NBR	EPDM	VITON
Temperature	80°C	140°C	150°C
Insulation grade	H		
Voltage	220-230VAC 50-60Hz	100-120VAC 60Hz	12-24DC
Power	22VA	22VA	18W
Ambient temperature	-10°C-80°C		
Installation	Installed according to the flow direction of the valve body, to improve the life and reliability, install it horizontal upward is best		
Connection	The standard is G, and the thread requirements such as NPT can be selected.		
Voltage fluctuation	± 10 %		
Can be equipped with coil	A32/A42		

Specification sheet

Connection way	Flow aperturemm mm	KV value m³/h	Pressure difference(BAR)							Model (voltage is 220v) X=N or E or V
			Minimum pressure	Maximum working pressure						
				Air, gas		Water, hot water		Light oil		
				AC	DC	AC	DC	AC	DC	
3/8"	15	1.86	0	8	7	8	7	7	4	2W-15-32X
1/2"	15	2.1	0	8	7	8	7	7	4	2W-15-42X
3/4"	20	5.7	0	8	7	8	7	7	4	2W-20-52X
1"	25	9.6	0	8	7	8	7	7	4	2W-25-62X
1 1/4"	32	22	0	8	7	8	7	7	4	2W-32-72X
1 1/2"	40	27	0	8	7	8	7	7	4	2W-40-82X
2'	50	35	0	8	7	8	7	7	4	2W-50-92X
2 1/2'	65	22	0	8	7	8	7	7	4	2W-65-A2X
3'	80	27	0	8	7	8	7	7	4	2W-80-B2X
4'	100	35	0	8	7	8	7	7	4	2W-100-C2X

Overall dimension drawing



model	A	B	C	Weight KG
2W-15-32X	66	56	100	0.30
2W-15-42X	66	56	100	0.29
2W-20-52X	72	56	107	0.6
2W-25-62X	98	76	106	0.85
2W-32-72X	112	86.5	180	0.8
2W-40-82X	123	94	190	1.1
2W-50-92X	168	120	209	1.45
2W-65-A2X	177.5	121.5	205	2.3
2W-80-B2X	226	156	226	2.9
2W-100-C2X	232	156	226	4.8